

Hisense

HM518

10" Rugged Tablet POS System



Rugged and Lightweight POS System for Harsh Environments

Run your retail or hospitality business more efficiently with the stylish, reliable and space-saving HM518 Rugged Tablet POS with Windows® operating system. The 10.1 inch, bezel-free and wide screen display is designed with Projected Capacitive (PCAP) touch technology that helps to extend the operating life and allow multi-touch control. Use the ports in the docking station to connect to a wide range of peripheral devices.

- 10.1" Wide Screen
- Bezel-Free Flat PCAP Multi-Touch
- Standard Integrated Card Reader
- Standard Docking Station with I/O Expansion
- Sturdy Hand Strap Standard
- Meets MIL-STD810G Standards for Shock and IP54 Standards for Exposure to Water and Dust



Bluetooth™



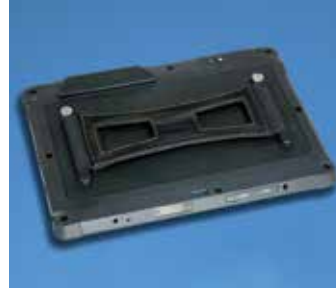
HM518 – 10" Rugged Tablet POS System



Stylish, Space-Saving Rugged Tablet Includes Docking Station



Lift the Rear Panel to Access the Docking Station's Ports



Standard Sturdy Hand Strap



Integrated Card Reader Standard

Features

- Front and Rear Cameras
- Integrated Card Reader
- 1 Watt Speaker
- Sturdy Hand Strap
- 3 LED Indicators
- Protected Against Dust and Water Sprayed From All Directions (IP Grade IP54)
- Withstands a Drop of 4 Feet Onto Concrete (MIL-STD-810G)
- HM518 Rugged Tablet Includes a Built-In Battery, MCR, Standard Docking Station, Power Adaptor and Cord

Optional Devices / Upgrades

The HM518 Tablet is available by special order with these features:

- Integrated 1D Barcode Scanner
- 3G (WCDMA GPRS)
- GPS

Specifications

		HM518
Processor:		Intel Celeron Processor N2807 1.58GHz
Operating System:		Windows 8.1 Pro / Windows 8.1 Embedded
Display:		10.1" TFT LCD (LED Back-Light)
Resolution:		1280 x 800
Brightness:		330 cd/m ²
Touch Panel:		True-Flat Projected Capacitive Touch
Memory:		2GB RAM
Storage:		32GB eMMC (Up to 64GB)
Camera:		5 Megapixel Camera (Supports 2D Barcode Function)
Wireless –	Wi-Fi:	WiFi802.11a/b/g/n/ac 2.4GHz / 5GHz
	Bluetooth:	Integrated Bluetooth V4.1
Speaker:		8 Ohm, 1 Watt Speaker
Audio:		3.5mm Socket
MCR:		Standard Integrated Triple Track Card Reader
Battery –	Type:	4000mAh (7.4V)
	Life:	6 Hours
I/O Interface:		Micro-SD Slot / SIM Card Slot / USB / Micro-USB
Tablet Connector:		24 Pin Pogo Style Connector
Docking Station I/O –	USB:	Three USB2.0 (2 Rear Panel / 1 Right Side)
	LAN:	One RJ45 (100Mbps LAN)
	Serial:	Two RS232C
	VGA:	One VGA Reserved for Second Display
	Cash Drawer:	One RJ11 – 12V/24V (24V Default)
	DC Input:	One DC Jack (12V)
Power Supply:		12V/3.33A External Power Adaptor 100-240V 50/60Hz
Temperature –	Operating:	32° F to 104° F (0° C to 40° C)
	Storage:	-4° F to 140° F (-20° C to 60° C)
Humidity –	Operating:	20% to 80% RH (Non-Condensing)
	Storage:	10% to 90% RH (Non-Condensing)
Dimensions –	Tablet:	10-7/8"W x 7-5/8"H x 7/8"D
	Tablet/Docking Station:	11"W x 6-5/8"H x 7-1/16"D
Safety and EMI:		FCC Class-B / CE Class-B / RoHS

